



# DUAL STREAM PILOT PROGRAM UPDATE

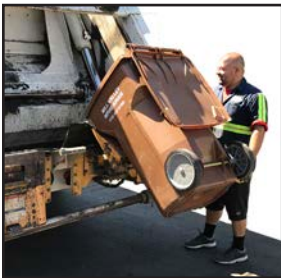
Is Your 22-Gallon Bin Too Small for Two Weeks? Early feedback suggests a better way to put out your dual stream recycling.

Some participants in this pilot program have asked if they could use their existing 68-gallon brown recycle cart for pick up of *both* recycling streams (Paper & Cardboard and All Other Mixed Recyclables) so long as they put out the right material on the right week. We think they've come up with a great idea. Here's the easy way to do it:

## PAPER & CARDBOARD RECYCLABLES WEEK

For this example, let's assume next week's pick up is for the Paper & Cardboard recycling stream.

This week, collect your Paper & Cardboard recycling in your existing 68-gallon brown recycle cart. Collect your other Mixed Recyclables (rigid plastic containers, metal cans, & glass bottles and jars) in a separate container, such as the 22-gallon brown bin we provided.



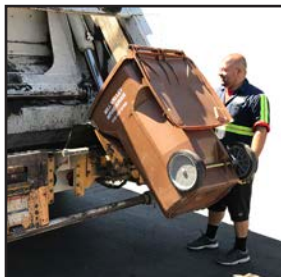
## PAPER & CARDBOARD RECYCLABLES PICK-UP DAY

On your Paper & Cardboard pick up day, roll *only* the 68-gallon brown recycle cart with your Paper & Cardboard to the street by 6:00 a.m. for pick up.

## ALL OTHER MIXED RECYCLABLES WEEK

Now you switch.

Now that your 68-gallon brown recycle cart is empty, simply transfer your week's worth of Mixed Recyclables into it and continue using it for Mixed Recyclables the next week. Now use the 22-gallon brown bin to collect your Paper & Cardboard stream.



## ALL OTHER MIXED RECYCLABLES PICK-UP DAY

On your Mixed Recyclables pick up day, roll *only* the 68-gallon brown recycle cart containing your Mixed Recyclables to the street by 6:00 a.m. for pick up.

**SWITCH AND REPEAT THIS PROCESS EACH WEEK**

Visit [www.millvalleyrefuse.com/pilot](http://www.millvalleyrefuse.com/pilot) for more information.