



## DUAL STREAM RECYCLING WITH ONE CART

Some residents prefer to use their existing 64-gallon brown Recycle Cart for pick up of *both* recycling streams (Paper & Cardboard and Containers).

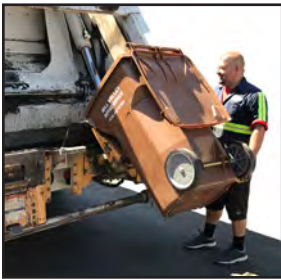
**This is fine as long as you put out the right material on the right week.**

**Please note:** We provide up to two 64-gallon Recycle Carts per residence. We do not provide any other size cart, can or bag for storing recycling while waiting for collection. For demonstration purposes in these images, we're using a 20-gallon container which can be purchased from most home improvement stores.

### PAPER & CARDBOARD RECYCLABLES WEEK

For this example, let's assume next week's pick up is for the Paper & Cardboard recycling stream.

This week, collect your Paper & Cardboard recycling in your existing brown Recycle Cart. Collect your Container Recyclables (rigid plastic containers, metal cans, & glass bottles and jars) in a separate cart/can/bag of your choosing.



### PAPER & CARDBOARD RECYCLABLES PICK-UP DAY

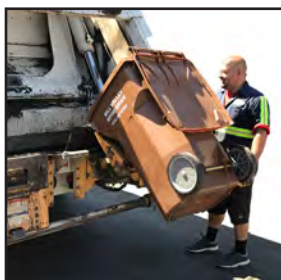
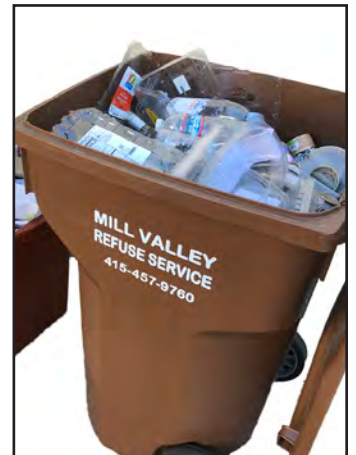
On your Paper & Cardboard pick up day, roll *only* the 64-gallon brown Recycle Cart with your Paper & Cardboard to the street by 6:00 a.m. for pick up.

### CONTAINER RECYCLABLES WEEK

*Now you switch.*

Now that your brown Recycle Cart is empty, simply transfer your week's worth of Container Recyclables into it and continue using it for Container Recyclables the next week.

Now use your smaller bin to collect your Paper & Cardboard stream.



### CONTAINER RECYCLABLES PICK-UP DAY

On your Container Recyclables pick up day, roll *only* the 64-gallon brown Recycle Cart containing your Container Recyclables to the street by 6:00 a.m. for pick up.

## SWITCH AND REPEAT THIS PROCESS EACH WEEK

Visit [www.millvalleyrefuse.com](http://www.millvalleyrefuse.com) for more information.